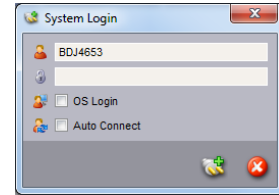


USING AVID ISIS SHARED STORAGE

- In AVID ISIS Client Manager, double-click on SYSTEM>BDJ-ISIS
 - Note: if the window doesn't appear when you log in (or if you X out of it), click on the Windows search button in the lower left>All Programs>AVID>AVID ISIS Client Manager
- Enter your class username and password
- Double-click on WORKSPACE>BDJ-ISIS to "MOUNT" the drive



- It is now your Z:\ drive
- Open COMPUTER>Z:\ drive
- Click NEW FOLDER, and add your name as the folder label
- Keep all of your video here in the future for high-speed editing