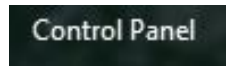


## CNN Newsource and Java

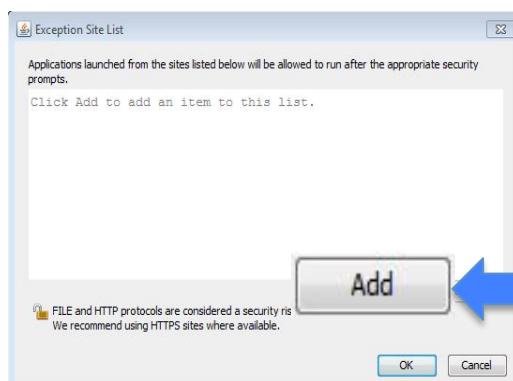
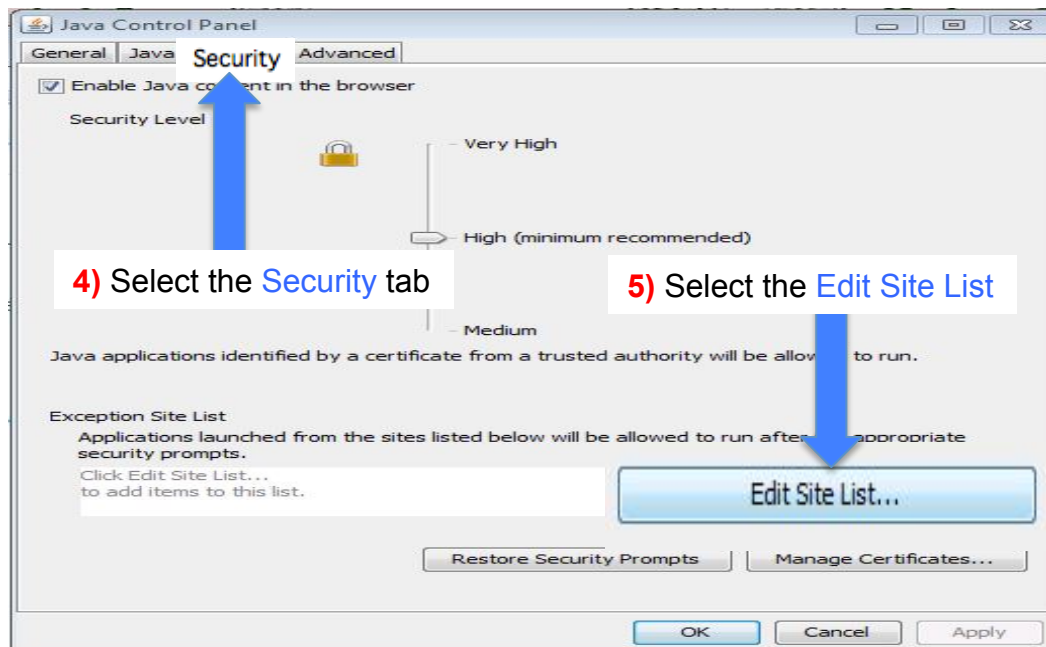
1) Select your **Start Menu** icon in the bottom left corner of your screen



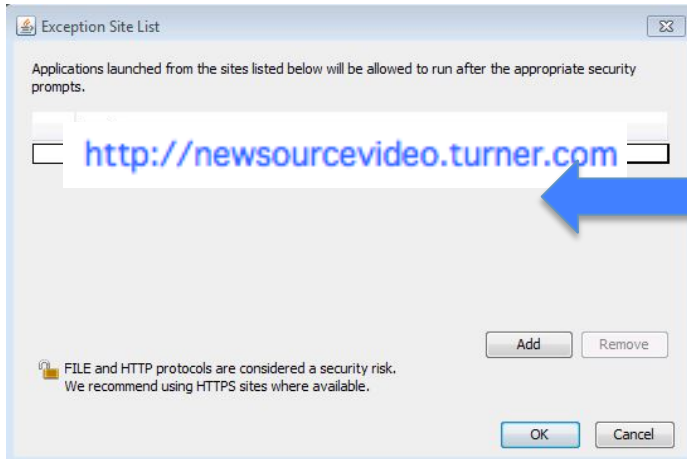
2) Select **Control Panel**



3) Select **Java**



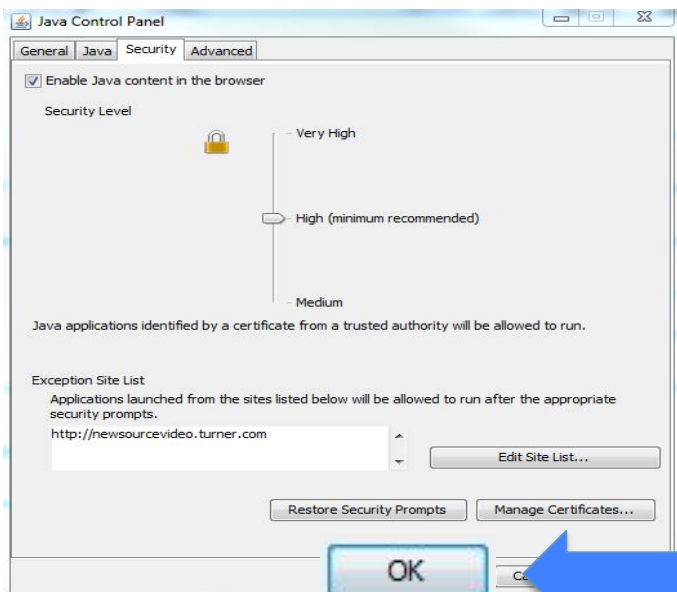
## CNN Newsource and Java



7) Enter:  
<http://newsourcevideo.turner.com>



8) Select **Continue**



9) Select **OK**

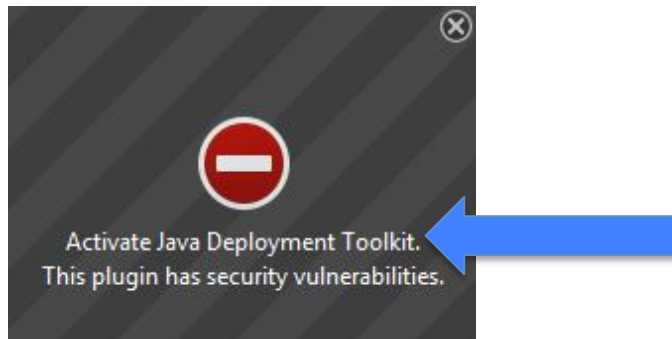
10) Close the **Control Panel** by selecting the red  in the top right corner

## CNN Newsource and Java

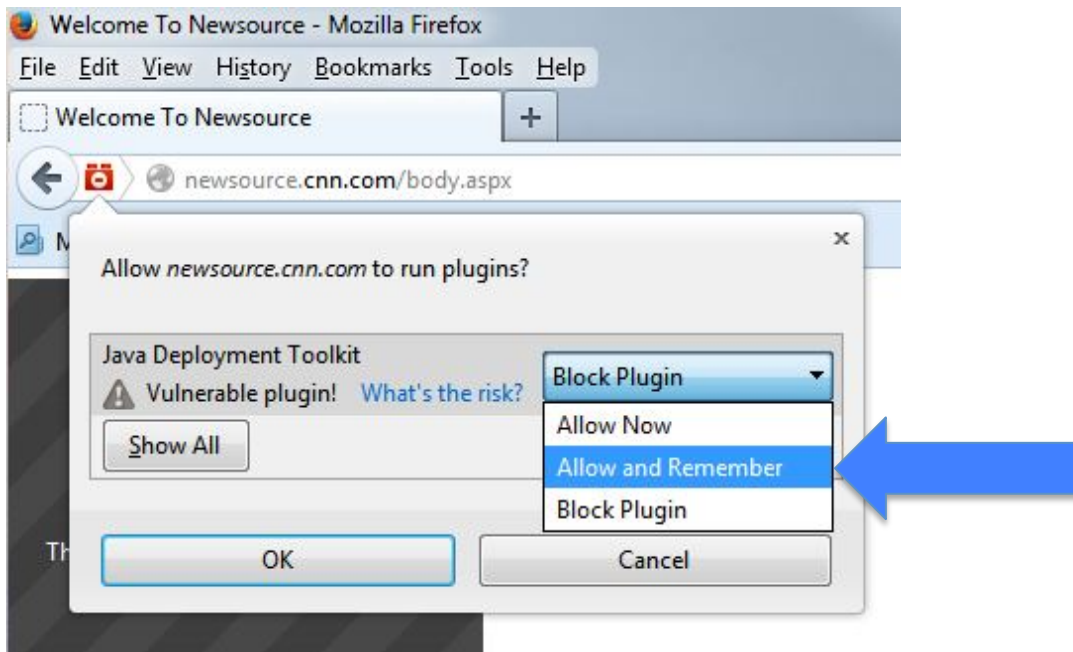
11) LAUNCH **Mozilla Firefox** and go to <http://newssource.cnn.com>

12) Follow the login instructions that have been provided to you by your department

13) If you receive the following pop-up:  
Select **Activate Java Deployment Toolkit**



14) And then Select **Allow and Remember** from the drop down



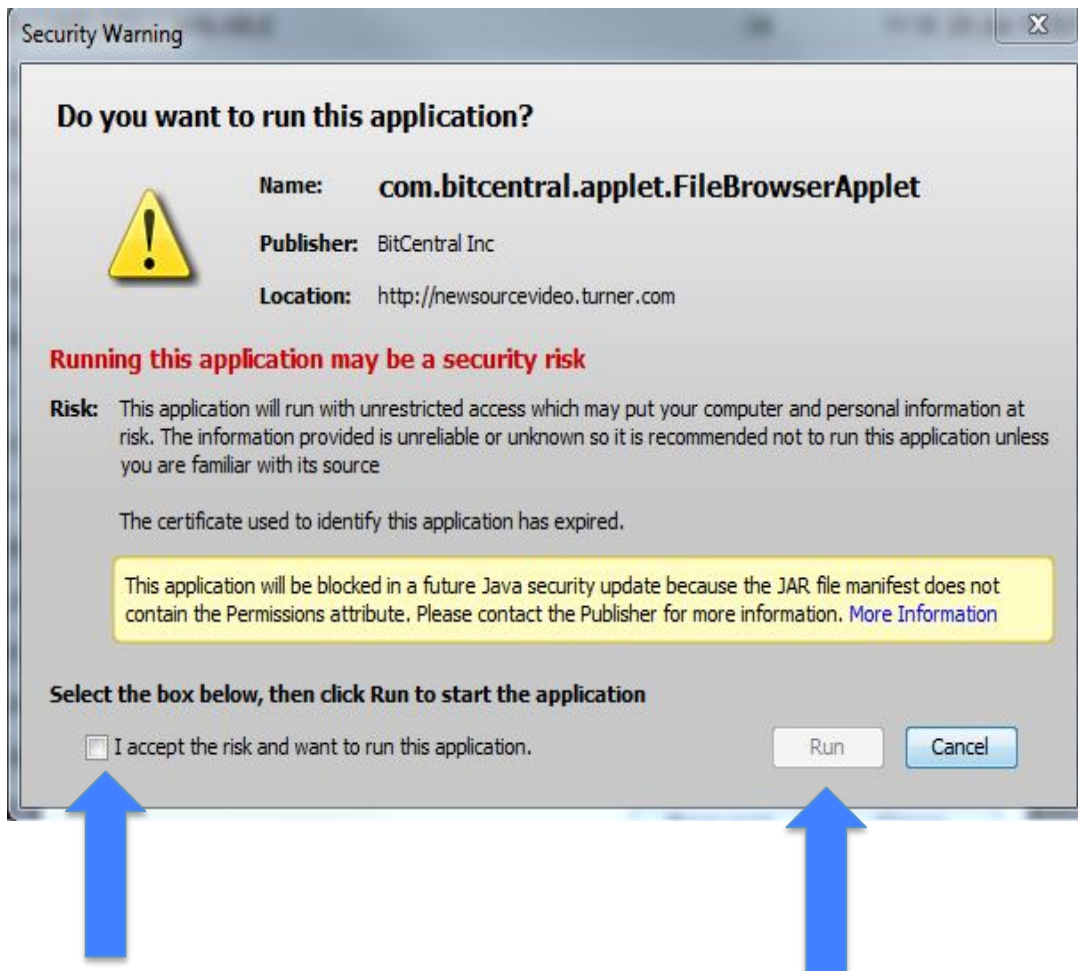
Please Note: IGNORE STEPS #13 and #14 if you do not receive that pop-up to Activate Java Deployment Toolkit


## CNN Newsource and Java

15) Select [See All Videos](#)

16) Select the video you wish to save

17) Select [I accept the risk and want to run this application](#) and [Run](#)



18) Select the  to choose the location you wish to save to

PLEASE NOTE: These settings save to your USER PROFILE per machine. If you return to the same machine daily, you will only be prompted to run the application, STEP #17. However, if you switch to a new machine daily, you will again have to go through all of the above steps.