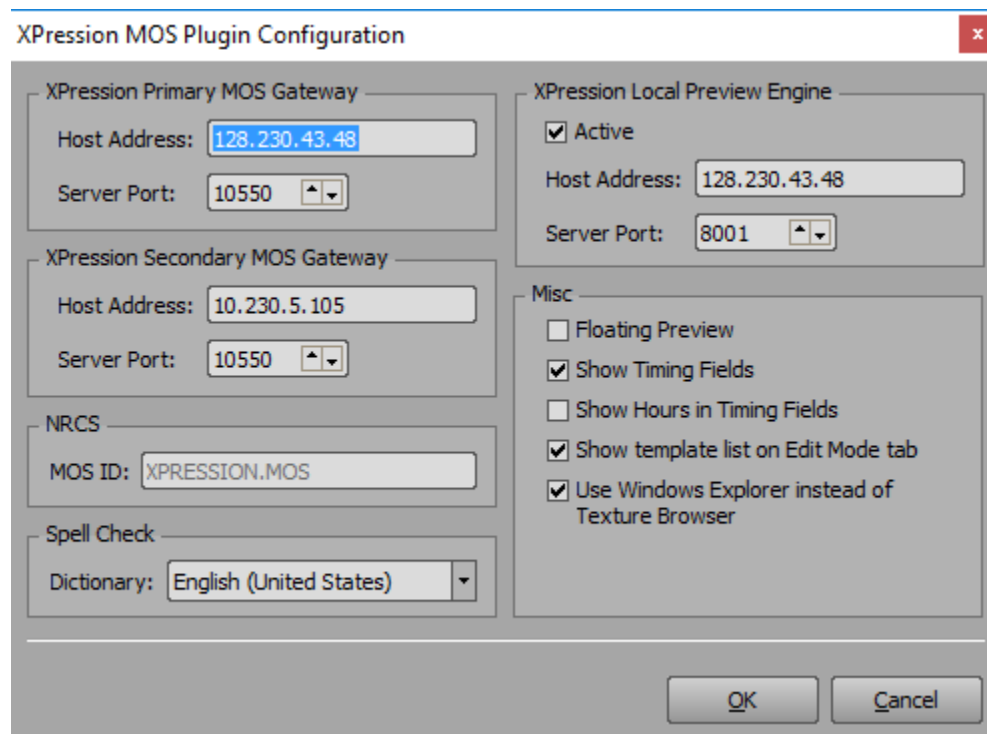
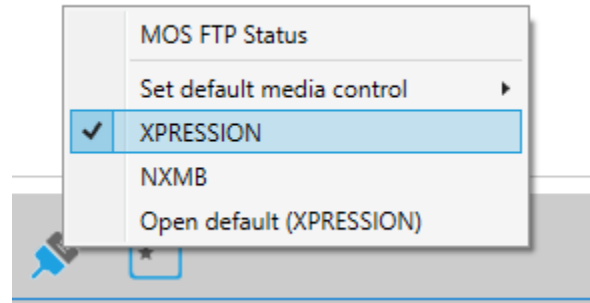


# STUDIO GRAPHICS: XPRESSION

## ENPS CONFIGURATION – only possibly needed the first time you use Xpression graphics in ENPS

1. In ENPS, configure the XPRESSION plugin:
  - Right-click the **MOS** icon in lower-right of ENPS
  - In the lower-left of the xPression window, choose **OPTIONS>Configuration**, and check for the following:



- HOST ADDRESS: **128.230.43.48** for Primary Gateway, **10.230.5.105** for Secondary Gateway
- Server Port: **10550**
- NRCS>MOS ID: **XPRESSION.MOS**
- SPELL CHECK>DICTIONARY: **English (United States)**
- XPRESSION LOCAL PREVIEW ENGINE: **check ACTIVE**
- Enter the same HOST ADDRESS as you did above
- MISC: check **SHOW TIMING FIELDS**

- MISC: check **SHOW TEMPLATE LIST ON EDIT MODE TAB**
- MISC: check **Use Windows Explorer...**
- Click on OK to save the configuration

2. Select the SHOW (upper-left corner):

- SHOW (...): select **NCC NEWS** in **SHOW** and **CATEGORY** (or **On The Hill** for **Mornings on the Hill**)
- Click OK

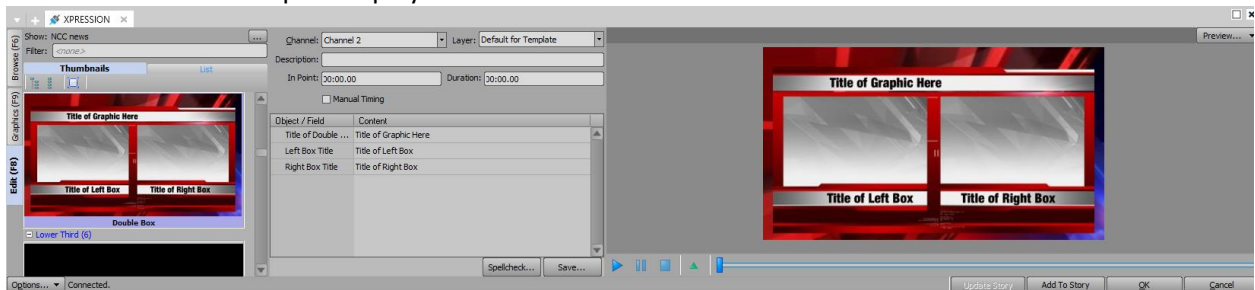
## TO CHOOSE GRAPHICS FOR THE SHOW:

First, open a story script, **and put the cursor AT THE TOP OF THE SCRIPT** –do NOT add the graphic in the middle of the script, where you actually want it to appear. The only exception: in the body of TV packages, DO create the graphic at the spot where the SOT appears in the script.

**NOTE: NEVER change any data under CHANNEL or LAYER!**

Once you've selected the correct SHOW above, all you do is use the thumbnails on the left to select the kind of graphic you want.

- In the THUMBNAIL area, choose the **EDIT** tab, and you'll see a template (like DOUBLE-BOX) You should see a three-part display like this:



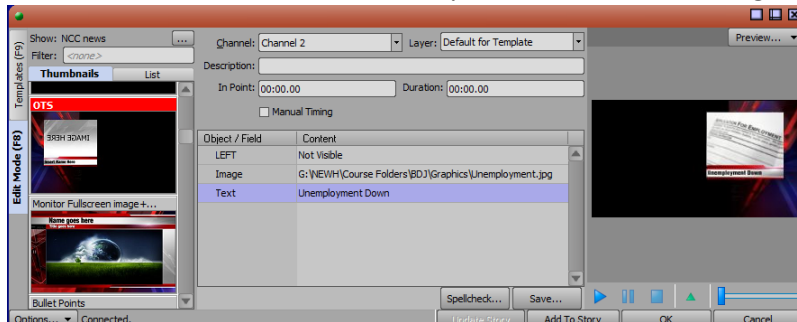
If you do NOT see the middle section, just double click on the big preview graphic on the right to float it, then close that window, and you should be able to expand the middle section. You need to be able to see these fields that open up in the center of the window:

Enter text into text fields in the **CONTENT** column (the Double-Box has three text fields for you to enter actual text into.) You should be able to see the new text in the PREVIEW window. Click SPELLCHECK to test it. **Do NOT click SAVE --**

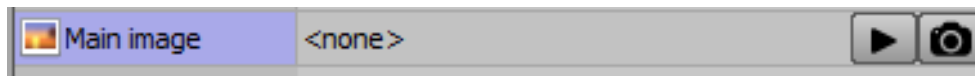
Click **ADD TO STORY** to add the graphic to your story, then OK to return to the story.

## ADDING GRAPHICS WITH IMAGES OR VIDEOS EMBEDDED

If you choose a graphic like an OTS or a MONITOR graphic, you'll need to choose an image or video to use. The IMAGE field below is where you would choose an image or video for this OTS.




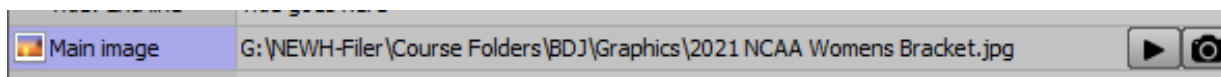
Click on the empty **IMAGE** field that says <none>, and you'll see two (...) boxes:



Use the  box on the **left** to embed a **videoclip** in the graphic, or use the  box on the **right** to embed a **still image**.

## EMBEDDING IMAGES IN GRAPHICS

Click on the RIGHT  box, and navigate to **CLASS FILES>GRAPHICS** where your image **MUST reside**, and select it. (This would be the **G: drive** in Windows.)



You should see it in the PREVIEW window, and add the needed text, then ADD TO STORY.

## EMBEDDING VIDEOS IN GRAPHICS

First, edit a videoclip in Premiere to use within the graphic:

- Import a new export preset from **CLASS FILES>UNIVERSAL TEMPLATES**, called **Newscast OTS video 2018 AVI**. Make sure you select **AVI** as the FORMAT when you import it
- Export any OTS video from Premiere using this new preset, **and export the video to CLASS FILES>GRAPHICS>VIDEOS**

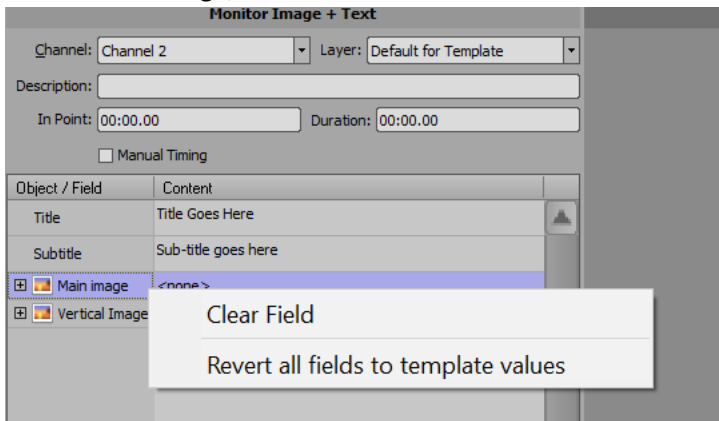
Finally, in the xPression OTS or MONITOR template, click on the LEFT-SIDE “...” box to select the video, the same way you would select an image, but navigate to CLASS FILES>GRAPHICS>VIDEOS where your videoclip SHOULD reside, and select it.

---

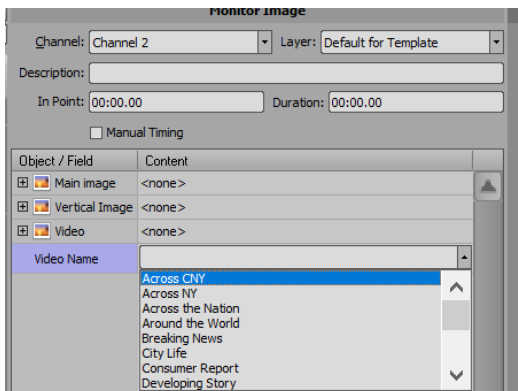
## FULL SCREEN MONITOR IMAGES

There are 2 places to put an image

- Main – for fullscreen, horizontal images
  - Vertical – for vertical images like a social media screenshot or election headshot
- If for whatever reason you put an image in the wrong field, simply right click in the Object/Field row for that image, and select “Clear Field”



- In the Monitor Image template, there is also a “Video” line with a dropdown menu under “Video Name”. Use this to select a pre-made background animation like Breaking News or First Weather.



There are now 2 image layers to drop pictures into on the Monitor Image only and Monitor Image + text templates. This allows you to put multiple images into one Xpression template. For example, if you want a logo on top of an image, you would put the logo on the top layer and the background image on the bottom layer. You are also now able to move and scale the top layer, as needed, in the Xpression plug in.

Like the sports scoreboards, there is now a generic monitor graphic in which you can select from a dropdown some of the more commonly used story graphics like Across the Nation and Around the World.

---

## QUOTE BOARD

Two separate text fields, one for the quote and one for the speaker. The speaker's name will automatically move down with the quote, so be careful not to type too much in the quote section. If needed, break the quote into 2 boards.

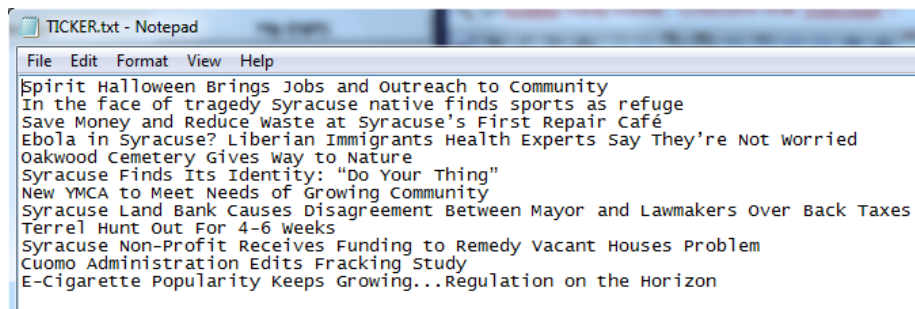
---

## OTSS

- Now has a vertical image option as well. Works the same as the Full Screen Monitor Images
- 

## TICKER

Assigned students must add a few fresh news headlines to the news ticker that will run across the bottom of the screen during the newscast. Do this by opening the .txt file in CLASS FILES>GRAPHICS called TICKER:



Each line is a new headline; delete old headlines and replace them with new ones. Then save and close the TICKER.txt file. Use sentence case, but CAPITALIZE everything but small words of three letters or less (see example in screenshot above).

DO NOT INCLUDE COMMAS OR COLONS OR SEMICOLONS (use ellipses instead,) and avoid using any unusual symbols (% , \$ , should be OK)

The ONLY active ticker is the one called ticker.txt If there are two people working on tickers for two different shows, the ticker for the second show, TICKER2.txt, should be copied and pasted into TICKER.txt after the first show ends.

---

## WEATHER

Weather graphics are a combination of data that are automatically updated via a direct connection to the Internet, plus some aspects of the graphics you select, like pictures for the 5-Day Forecast. There are maps that include data coming from the National Weather Service station at Hancock Airport.

The graphic that is automatically updated is: HOURLY FORECAST. All of the rest require you to take steps to update the data. The required steps are all outlined in each script page of the Weather block of the rundown.

NOTE: The xPression plugin in ENPS does NOT show you the actual current data being pulled in from the Internet, it shows you the placeholder numbers on the template; actual numbers come up automatically during the newscasts.

**All the data for newscast current conditions, tonight/tomorrow, five day come from this National Weather Service site:**

**[http://forecast.weather.gov/MapClick.php?site=bgm&zmx=&zmy=&map\\_x=167&map\\_y=64&x=167&y=65#.V\\_J3siRv816](http://forecast.weather.gov/MapClick.php?site=bgm&zmx=&zmy=&map_x=167&map_y=64&x=167&y=65#.V_J3siRv816)**

**Data for the almanac come from this site:**

**<https://www.wunderground.com/weather/KSYR>**

The typical weather graphics are already in the rundown template, and each weather page in the rundown details how to use and update each graphic. You can add or delete whatever graphics you want.

---

## STOCKS

A full-screen stocks graphic is available that automatically loads live data for both DOW JONES and NASDAQ. Just remember to add the Stocks graphic to a rundown story script using Xpressions, that's all you do, you do not add any data to it, it pulls the data from the web.

## SPORTS

There are now just 2 scoreboard templates. One for a single game with bullet points (Scoreboard + Bullets) and one for 2 games (Scoreboard 2 Games).

Both of these now feature images you can select for the following sports:

Football

Soccer

Basketball

Hockey

Lacrosse

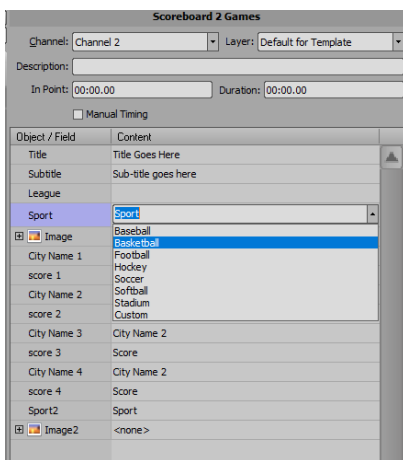
Baseball

Softball

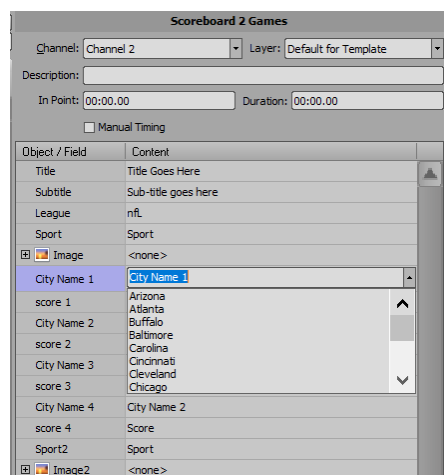
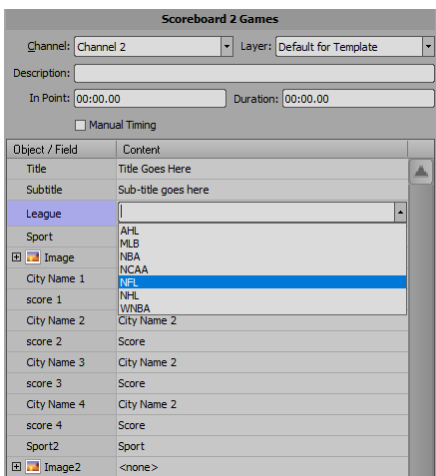
Custom – you can add your own sport image! See below...

### Scoreboards

- One with bullet points, one with 2 games, both function the same
- There is a row called “sport” which is a dropdown menu that you can select a background image to appear.



- To assist in filling out the graphic, select the “League” from another dropdown menu. This tells Xpression what teams to allow you to pick from for the graphic. For example, selecting the NFL will only show NFL teams in the “City Name” dropdown menu. Once you select a city, the graphic will automatically add the city name as well as the team name to the graphic.



When you select a sport from the drop down menu in the Xpression plugin, an image on the left automatically populates. There is also an option to add a custom image for yet another sport.

When you select this, you can then drop an image from another sport into the “pic” line in the plugin. Please note that for best results, save the image using a special FS Insert Builder that we’ve created. It’s a Photoshop project that makes it super simple to add a custom graphic in the best dimensions. This can be found in G:\NEWH-Filer\Course Folders\BDJ\Graphics\GFX Builders>FS Insert Builder:

- Find an image of a sport, then drop the image into the black image box in Photoshop’s main window
- Press CTRL+T to adjust the size of the image to fit the black box
- Press the “v” key to be able to drag the image L or R within the black box
- When ready, SAVE AS JPEG into CLASS FILES FILES (G:\NEWH-Filer\Course Folders\BDJ\Graphics\GFX Builders) and select it using the CUSTOM area in the xPression graphic (Use the PIC area below CUSTOM to select this new image)

For sports graphics, there are actually several Photoshop builders in CLASS FILES (G:\NEWH-Filer\Course Folders\BDJ\Graphics\GFX Builders.) There is a video on how to make these graphics to go along with this written instruction. Open the builder you need, either NFL, Baseball, Hockey, NBA, or NCAA. There are two folders, one labeled Home and one labeled Away. Open these folders to reveal all the teams (on some of these, there might be more folders, for instance Hockey will have an NHL and an AHL folder). Scroll down to the team you need to be Away, and click the eye icon to make it visible. Scroll down to the team you need for Home, and click the eye icon to make that visible. Then go to File>Save As and save your image as a jpeg or tga. When you are done, close the Photoshop builder without saving please!